



Model: JY-6000N

Rating: 6000 CWP

Design feature:

- Screwed-In Bonnet With Metal-To-Metal Fire-Safe Design.
- The Needle Valve Is Ideal For Effective Control Of High Pressure Oil And Steam.
- Rising Stem; T Handle Operation.
- 100% 1.5 scale body rating Hydraulic test.
- Investment cast body construction.
- EN 10204 3.1 Certificate Available

Specifications:

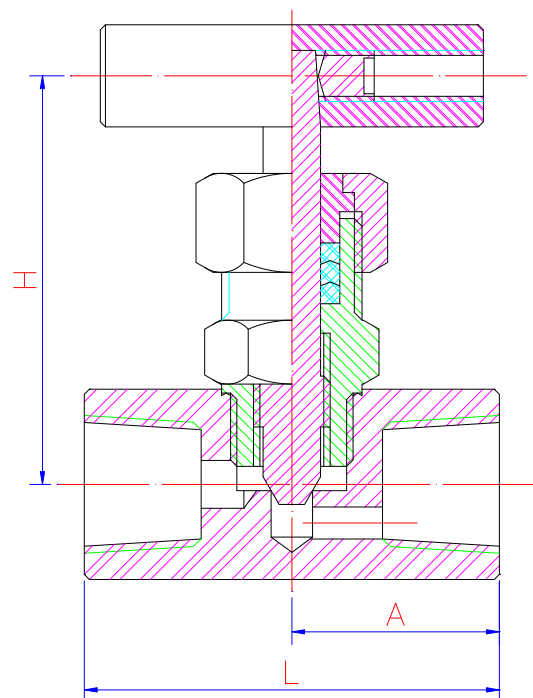
- Construction: Screwed-In Bonnet With Metal-To-Metal Fire-Safe Design.
- Rating: 6000 WOG
- Temperature:
 - PTFE (to180°C)
 - 25% Graphite+PTFE (to 260 °C)
 - Carbon Fiber (to 500°C)+SS316 MESH
- Materials: ASTM A351 CF8M/ A105
- Size range: 1/8" ~ 2"
- End Connections: Threaded, Socket-Weld.

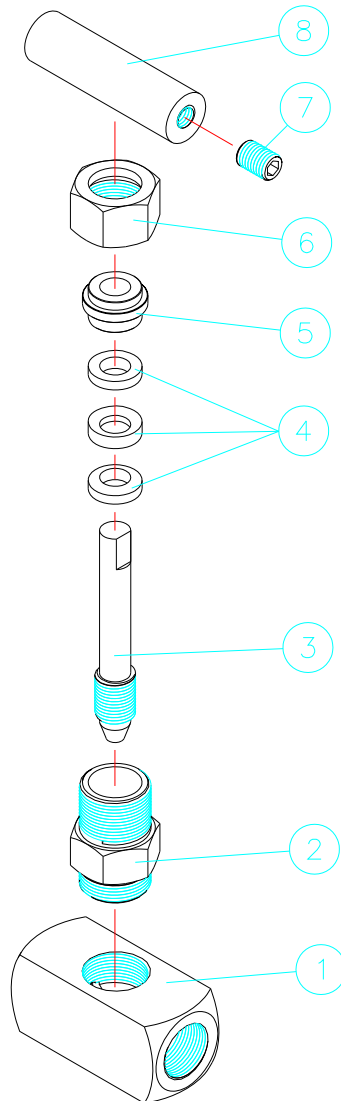
Standard:

- Basic Design to ANSI B16.34
- Female Thread: NPT, Rp, Rc,.
- Inspection & testing according to API 598.
- PED 97/23/EC; ISO 9001

Dimensions List:

Size	A	L	H	Weight (KG)
1/8"	29	58	75	0.36
1/4"	29	58	75	0.35
3/8"	29	58	75	0.35
1/2"	32.5	65	87	0.56
3/4"	35	70	90	0.7
1"	40	80	103	1.3
1-1/4"	45	90	108	*
1-1/2"	50	100	115	*
2"	55	110	121	*





MATERIALS LIST:

NO	PART NAME	MATERIAL	NO	PART NAME	MATERIAL
1	Body	A351 CF8M/ A105	7	Set Screw	SS304
2	Bonnet	A351 CF8M/ A105	8	Handle	SS410
3	Stem	SS316	9		
4	Stem packing	PTFE	10		
5	Gland	SS304	11		
6	Gland Nut	SS304	12		

MODEL:JY-6000N

VALVE SIZE	CV value (unit:gpm)
1/8"	0.7
1/4"	0.8
3/8"	0.9
1/2"	1.2
3/4"	1.3
1"	1.8
1-1/4"	2.0
1-1/2"	2.8
2"	4.0

Date : 2019 / 2 / 27