

KLINGER® Wall Collar MK GII



With rising water pressure, the KLINGER® Wall Collar, placed on the pipe in the middle of the masonry, protects the building along the smooth pipe surface from escaping or penetrating moisture.

Safe Efficient Easy
Fast Optimized Ecological

KLINGER -
worldwide leader in gaskets

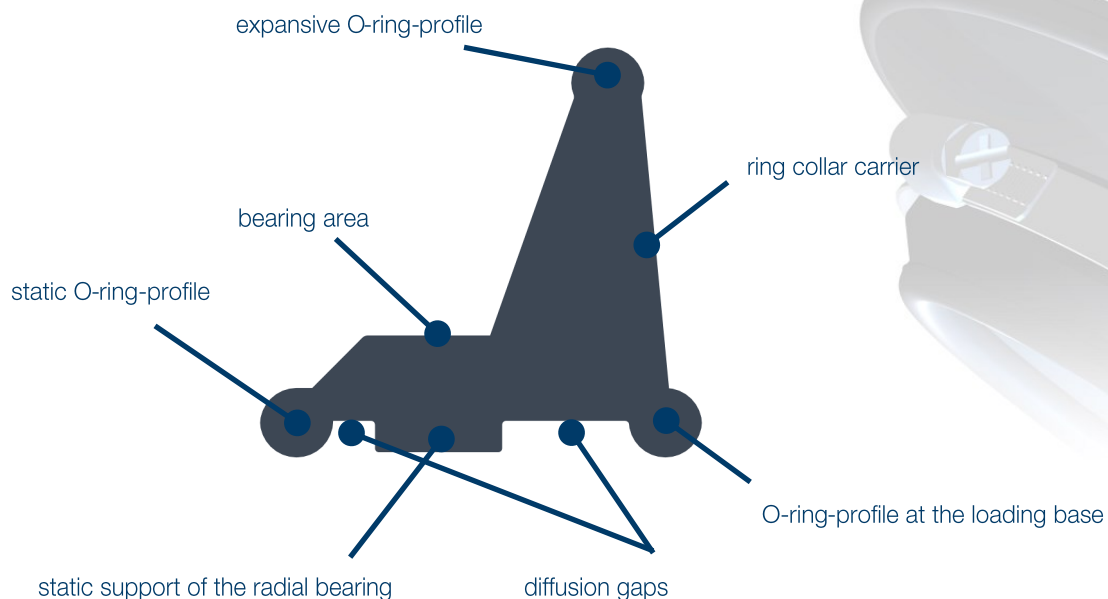
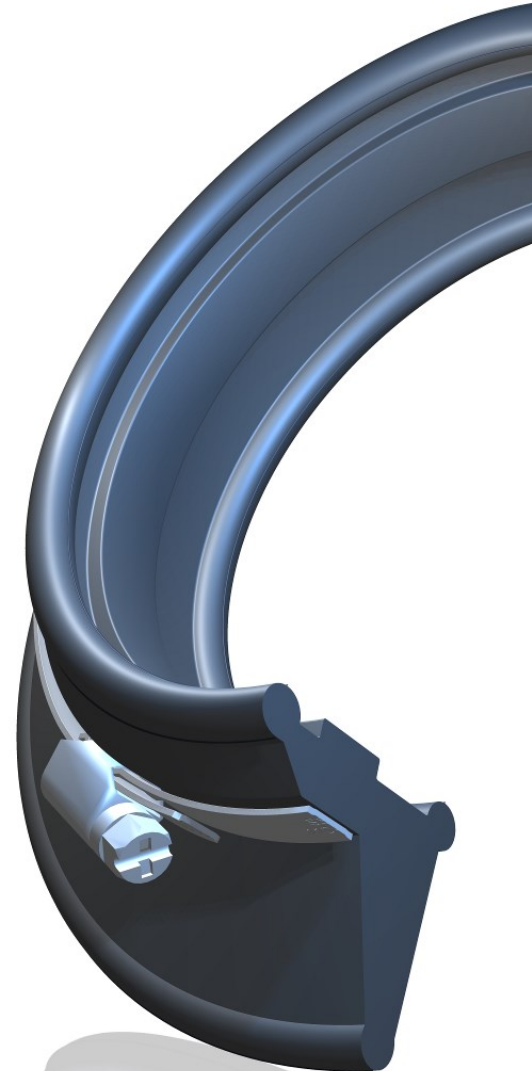
KLINGER® Wall Collar MK GII

KLINGER GmbH always strives to develop innovative and resource-saving products.

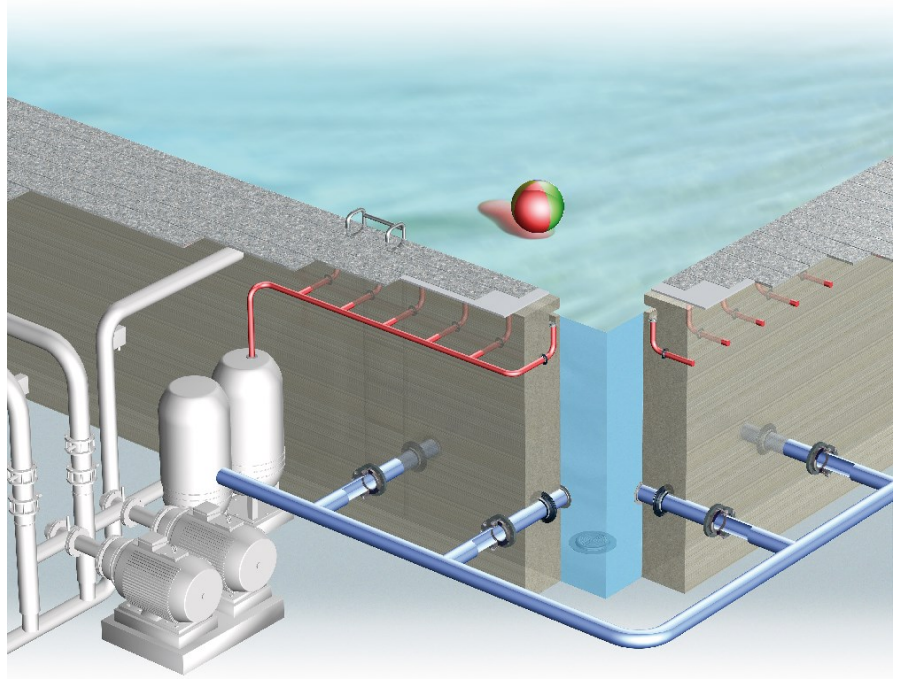
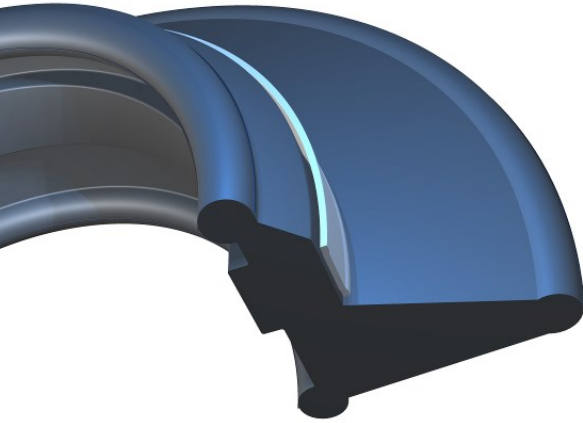
Wherever smooth pipes made of different materials such as plastics, stoneware, cast iron or stainless steel are routed through walls, floors or even ceilings made of concrete, the transition from the pipe outer diameter to the surrounding concrete must be reliably and permanently sealed.

Climate protection and functional improvement in one product:

- 10 bar / 100 meters water column, regardless of the installation direction, leak-proof, tested by MFPA Leipzig GmbH) Test reports PB 5.1 / 18-005-1 and 5.1/19-491-1)
- Significant reduction in CO₂ emissions during production by optimizing the profile
- highly flexible and stretchable structure
- only one radial clamping belt / and thus only one tension clamp required



KLINGER® Wall Collar MK GII

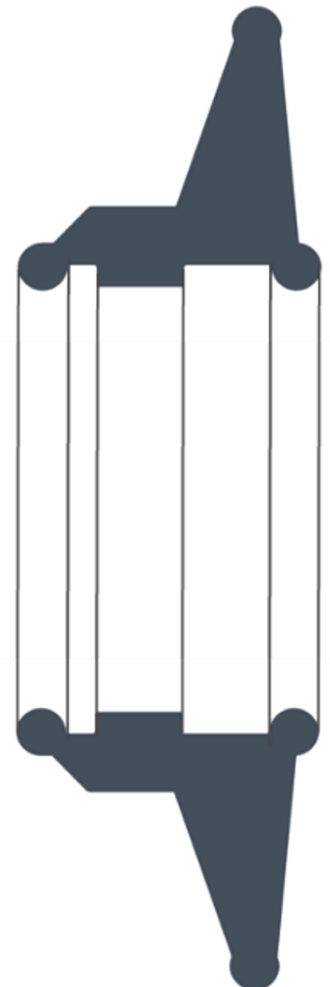


The new patent-pending KLINGER® wall collar MK GII not only offers the most efficient and environmentally friendly option for professional sealing, but also, thanks to its modern and optimized shape, maximum clamping force for sealing on the outer pipe diameter and also highly rubber-elastic behaviour during assembly.

Even KLINGER® wall collars MK GII with large dimensions can be retrofitted comparatively quickly and easily.

Regardless of whether the KLINGER® MK GII wall collar has to be installed in swimming pools or in groundwater troughs, a pressure-tight seal is easy to produce on site and depends on:

- Cleanliness during assembly (pipe surface and wall collar inside)
- Pressure-bearing and statically stable pipeline
- Assembly of the clamps over the radial bearing area in hand-tight condition (no special tools)
- Compliance with the specifications for the processing time and compaction of the concrete used
- Covering with concrete on all sides of at least 30 mm



KLINGER® Wall Collar MK GII

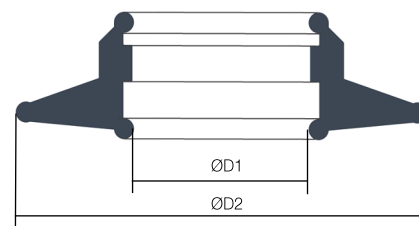
The dimensions at a glance

The KLINGER® wall collar MK GII is made of EPDM as standard. Other materials are possible on request and specification.

We also manufacture the wall collars according to your wishes. Please indicate the exact outside diameter of the pipe used in millimeters [mm]. There is no restriction in the nominal size (DN).

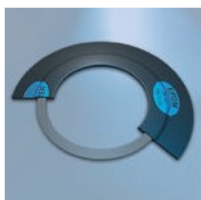
The KLINGER® wall collar MK GII is supplied with a stainless steel clamp as standard. However, other materials such as galvanized steel, plastics, etc. can also be configured for this purpose .

Pipe OD Ø	DN	D1 Ø	D2 Ø	Pipe OD Ø	DN	D1 Ø	D2 Ø
25	20	22	102	500	500	490	570
32	25	29	109	560	600	547	627
40	32	38	118	630	600	613	693
50	40	48	128	710	700	690	770
63	50	60	140	800	800	775	855
75	65	71	151	900	900	870	950
90	80	84	164	1000	1000	965	1045
110	100	105	185	1200	1200	1155	1235
125	125	120	200	1400	1400	1345	1425
140	150	135	215	1600	1600	1535	1615
160	150	154	234	1800	1800	1725	1805
180	200	175	255	2000	2000	1915	1995
200	200	195	275				
225	250	215	295				
250	250	245	325				
280	300	275	355				
315	300	310	390				
355	350	352	432				
400	400	395	475				
450	450	442	522				

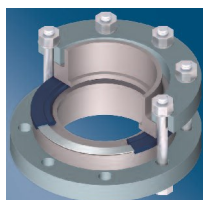


KLINGER® offers you excellent sealing products for all areas of application

KLINGER®KGS



KLINGER®KGS/TK



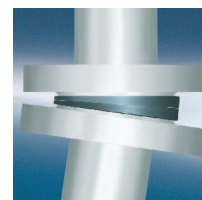
KLINGER®KGS-Flon



KLINGER®KGS/MK



KLINGER®KGS/VD



KLINGER®KNS



Certified acc. to

DIN EN ISO 9001:2015

Technical changes reserved.

Status: January 2021

KLINGER GmbH

Rich.-Klinger-Straße 37

D-65510 Idstein

Tel +49 6126 4016 0

FAX +49 6126 4016 11/22

email: mail@klinger.de

http://www.klinger-elastomere.de

